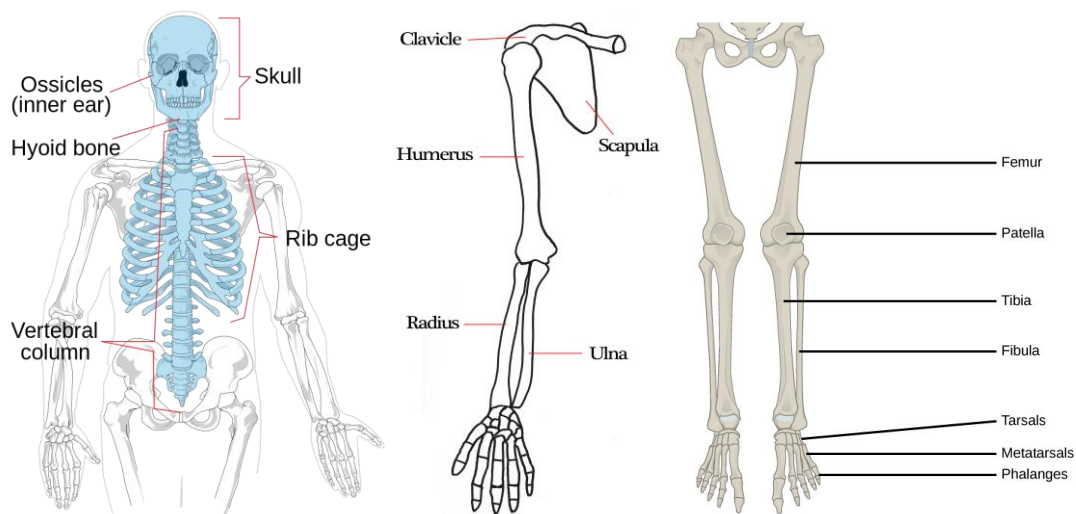


Bones

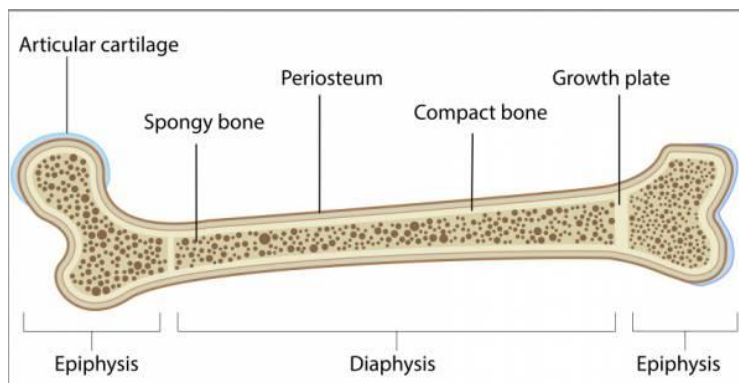
Students will be assessed on their ability to:

- Recall the main parts of the skeleton: axial skeleton (vertebral column, ribcage and skull), appendicular skeleton (scapula, clavicle, pelvis and limbs) and the structure of a long bone.
- Describe the functions of the skeleton using examples from the list above.

Axial Skeleton (ossicles and hyoid bone not required)



Structure of a Long Bone



Functions of a Skeleton

- Protection (ribcage)
- Shape (femur)
- Support (vertebral column)
- Movement (radius and fibula)
- Blood production (produced in the bone marrow of some bones)